

Courtesy Of Nicole Mazurak Of 2% Realty Pro

\$469,900 - 503 Suncrest Lane, Sherwood Park

MLS® #E4221500

\$469,900

3 Bedroom, 3.00 Bathroom, 1,894 sqft
Single Family on 0 Acres

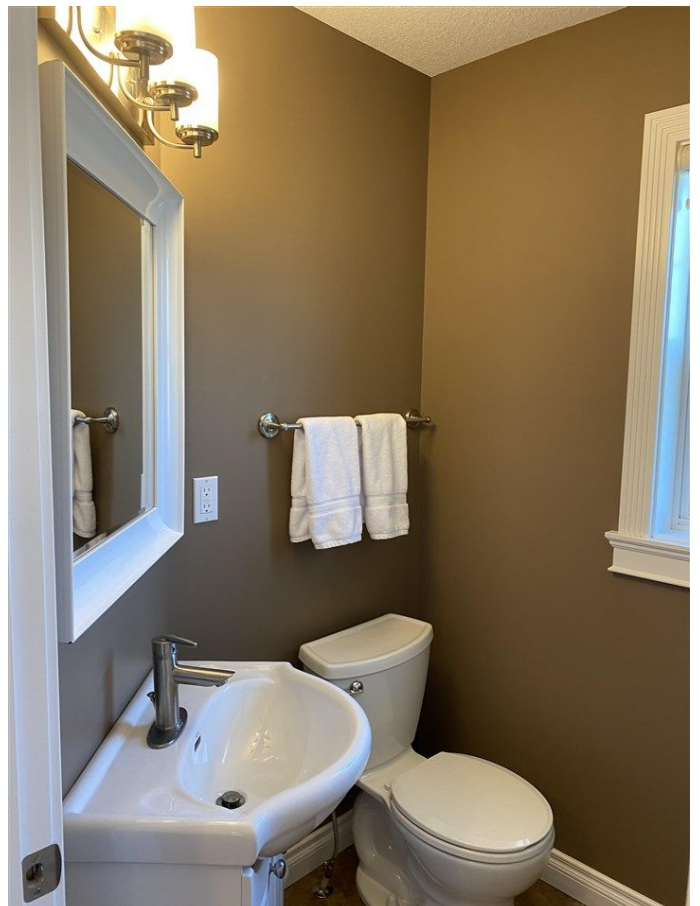
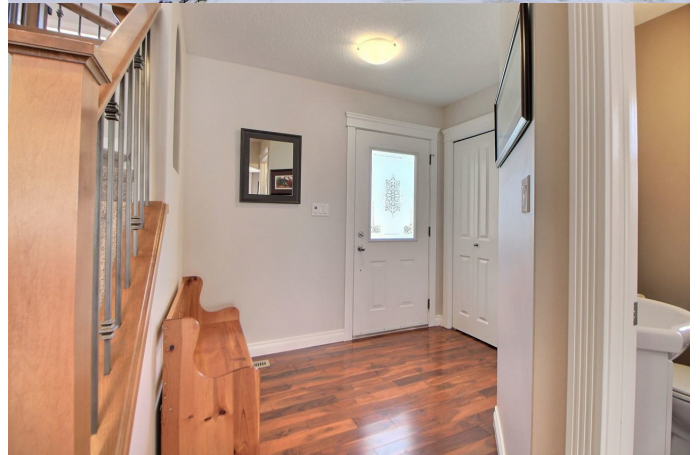
Summerwood, Sherwood Park, AB

WELCOME HOME TO GORGEOUS SUMMERWOOD!!! This 1894 sqft Custom Built 2-Storey home is waiting! No detail was spared on this truly impressive property that has been meticulously maintained. Walk into your generous sized foyer and enjoy entertaining in the open concept kitchen/living room boasting Walnut Hardwood Flooring and Ceramic Tile. The kitchen has Maple Cabinets, Granite Counter-tops and Stainless Steel Appliances. Enjoy eating at your Bar Height Island and the dining room which is just off the kitchen. The Pantry is Walk-through to your spacious laundry/mudroom. Upstairs you will find an enormous BONUS ROOM with vaulted ceilings! There is an amazing Master Retreat with a 5 pc ensuite and walk-in shower/corner soaker tub! Two more large bedrooms and another Full Bathroom complete the upstairs. Outside there is a landscaped front yard and SOUTH FACING back yard on a big CORNER LOT! An OVERSIZED attached double garage completes this home and it is right beside a nature reserve and WALKING TRAILS!

Built in 2010

Essential Information

MLS® #	E4221500
Price	\$469,900



Bedrooms	3
Bathrooms	3.00
Full Baths	2
Half Baths	1
Square Footage	1,894
Acres	0.00
Year Built	2010
Type	Single Family
Sub-Type	Residential Detached Single Family
Style	2 Storey
Status	ACTIVE

Community Information

Address	503 Suncrest Lane
Area	Sherwood Park
Subdivision	Summerwood
City	Sherwood Park
County	ALBERTA
Province	AB
Postal Code	T8H 0E9

Amenities

Features	Air Conditioner, No Smoking Home
Parking	Double Garage Attached
# of Garages	2

Interior

Interior	Carpet, Ceramic Tile, Hardwood
Interior Features	Air Conditioning-Central, Dishwasher-Built-In, Dryer, Garage Control, Garage Opener, Microwave Hood Cover, Refrigerator, Stove-Electric, Vacuum System Attachments, Vacuum Systems, Washer, Window Coverings
Heating	Forced Air-1
Bedrooms on Main Level	N
Has Basement	Yes
Basement	Full, Unfinished
Fireplace	Yes
Fireplaces	Gas, Brick Facing
# of Stories	2

Exterior

Exterior	Vinyl
Exterior Features	Corner, Fenced, Flat Site, See Remarks
Roof	Asphalt Shingles
Construction	Wood Frame
Foundation	Concrete

School Information

Elementary	Davidson Creek Elementary
Middle	Sherwood Heights
High	Salisbury Composite

Listing information last updated on January 23rd, 2021 at 6:31 am MST